

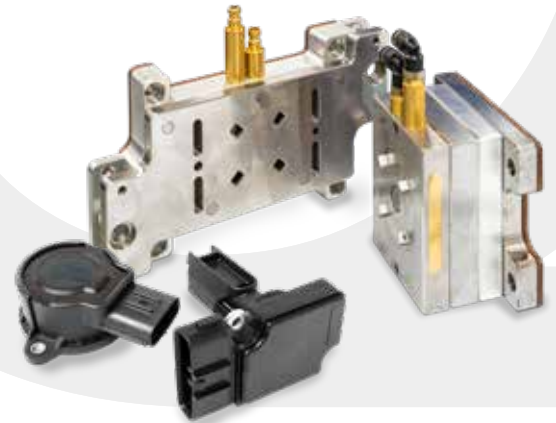
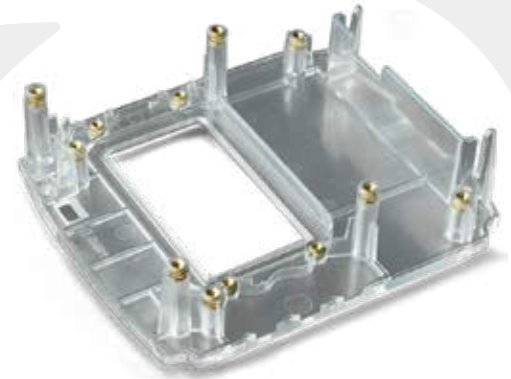
INJECTION MOLDING

Quickparts supports its injection molding customers from design review to manufacturing in just a few weeks, including prototyping, low-volume production, and scale up.

While we do not ask customers to change their design to fit into our box, we assist with design for manufacturing review and can help make adjustments after consumer or engineering feedback to help get your parts and products to market faster.

General Properties:

- Variety of polishing and texturing capabilities
- ISO 9001:2015 certified facilities
- Class 103 to 105 injection tooling
- Certified P20 steel, H13, and stainless steels
- Tooling trial capabilities ranging from 40- to 1600-ton molding presses (in-house and through partners)
- Fully automated tooling with slides, lifters, and standalone tool bases



Lead Times:

2 - 4 weeks for T1 samples



Typical Applications:

- Packaging
- Consumer goods
- Medical devices
- Electronics & telecommunications
- Mechanical parts (including gears)



Dimensional Limitations

Machine tonnage
25T to 1300T



Materials:

Quickparts offers most commercially available thermoplastics, including:

- ABS
- HDPE
- LDPE
- PC/ABS
- PET
- PMMA
- POM
- PC
- PP
- PS
- PA (Nylon) 6/6
- TPE
- TPU



Finishing:

Quickparts offers a complete range of part finishing and assembly options.



France | Germany | Italy | United Kingdom | United States

+1 931 766 7290 | quickparts.com

Quickparts